



Gatwick Airport Northern Runway Project

Environmental Statement
Project Description Figures – Tracked Version

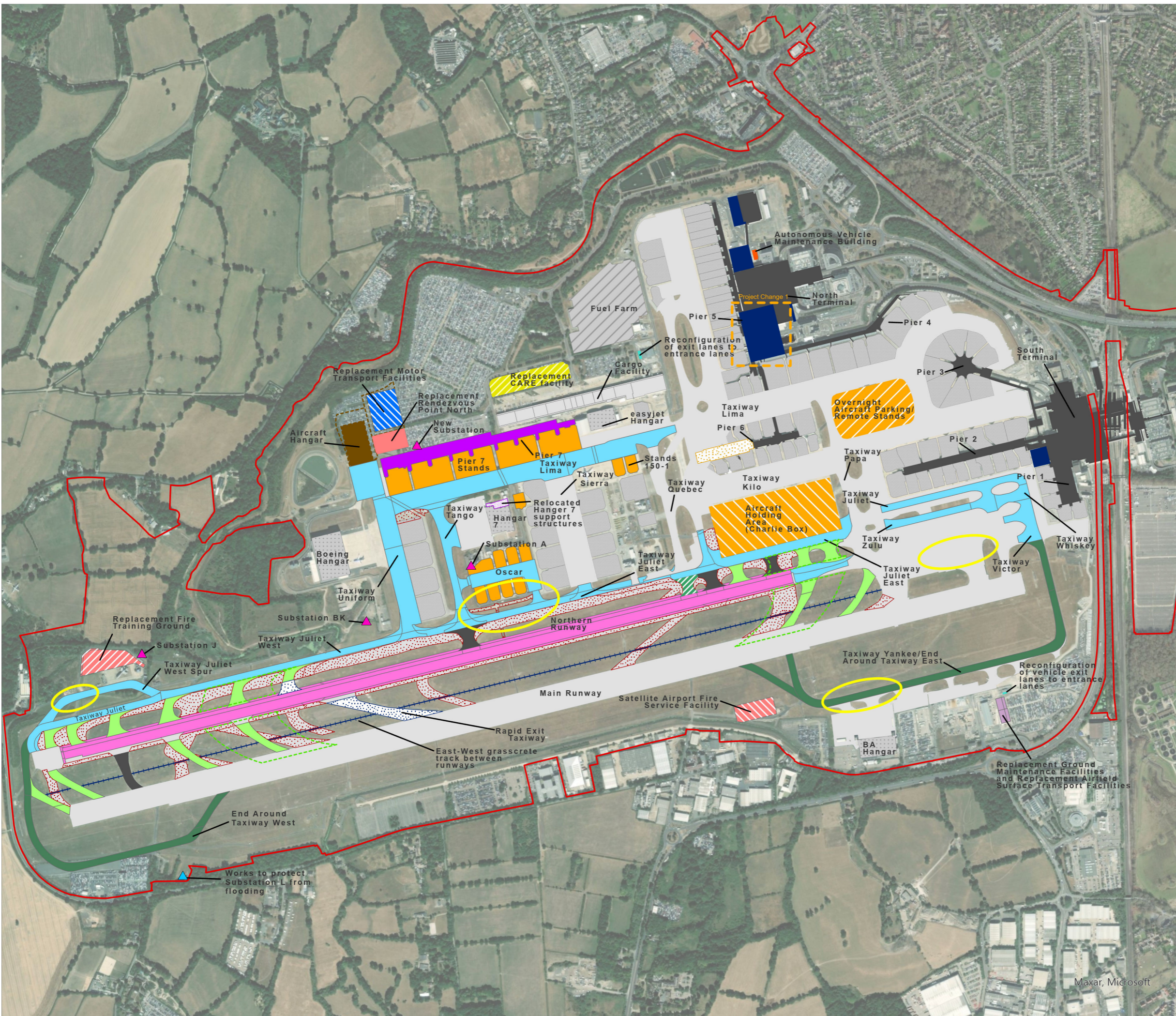
Book 5

VERSION: 3.0

DATE: FEBRUARY 2024

Application Document Ref: 5.2

PINS Reference Number: TR020005



- Project Site Boundary
- Existing**
- Terminal buildings
- Cargo facility buildings
- Fuel Farm
- Hangar
- Existing stands
- Existing taxiway
- Existing exit/entrance taxiway
- Future Baseline**
- Pier 6 Extension
- Rapid Exit Taxiway
- Proposed**
- Hard standing returned to grass
- Repositioned Northern Runway
- Taxiways
- Aircraft Stands
- Aircraft Holding Area
- Overnight parking / remote aircraft stands
- End Around Taxiways
- Modified exit/entrance taxiway
- Exit / Entrance Taxiways
- Exit / Entrance Taxiways Envelope
- Terminal works
- Pier 7
- Hangar
- Reconfigured car parking areas
- Replacement fire training ground
- Replacement motor transport facilities
- Replacement Ground maintenance Facilities and Replacement Airfield Surface Transport Facilities
- Replacement Central Area Recycling Enclosure (CARE) facility
- Replacement Rendezvous Point North
- Satellite Airport Fire Service Facility
- Relocated Hangar 7 support structures
- Autonomous Vehicle Maintenance Building
- Reconfiguration of vehicle exit lanes to entrance lanes
- Runway Access Track
- Engine ground running areas
- Substation
- Works to protect Substation L from flooding
- Revisions from version 2.0

DOCUMENT
Environmental Statement

DRAWING TITLE
**Proposed Airport Works
(Version 3 Tracked Changed with
Project Change 1)**

DATE
February 2024

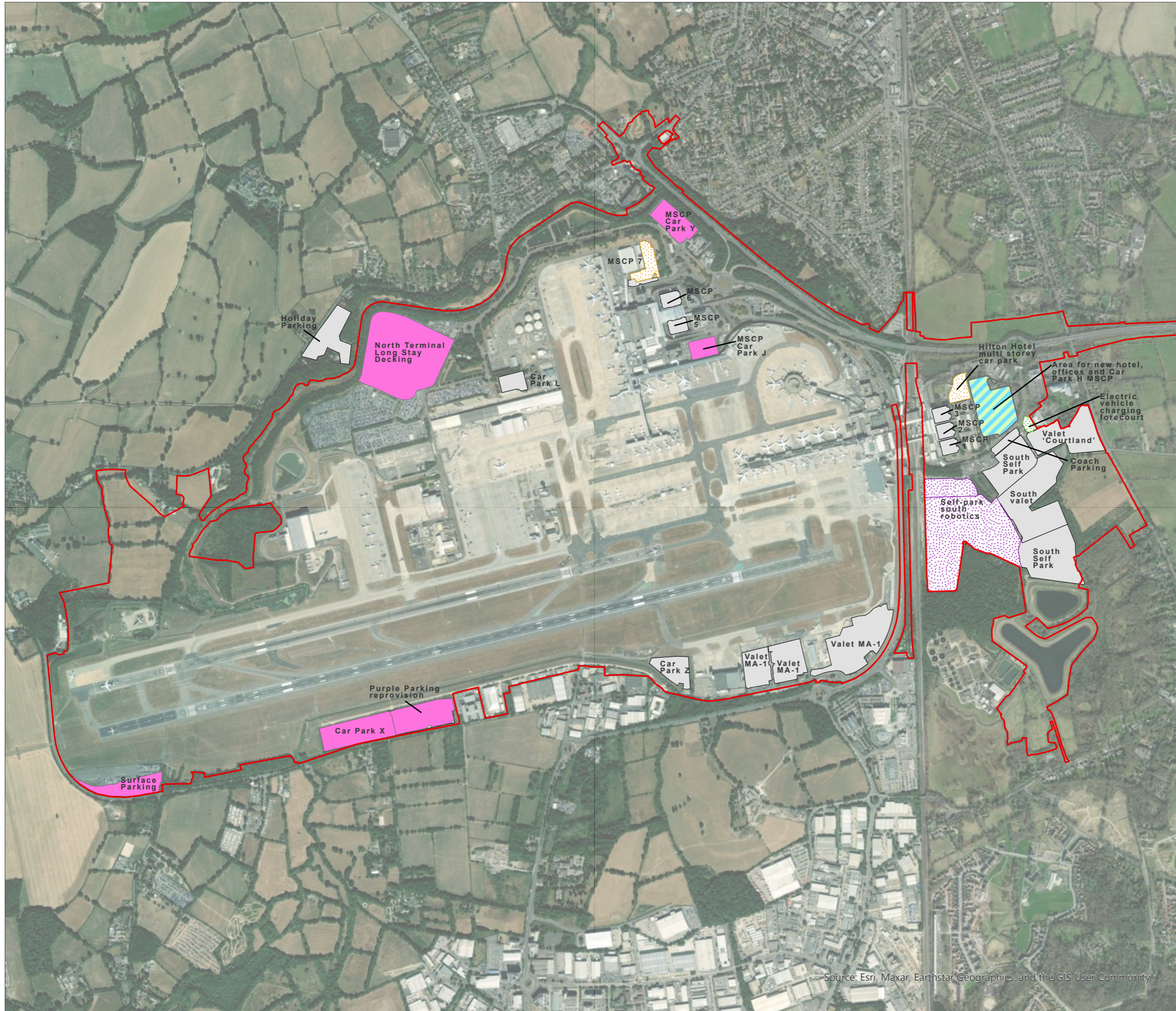
	DRAWING NO.	REVISION
	FIGURE 5.2.1a	3.0
	DRAWN BY	PM / CHECKED BY
	MS	KC

SCALE @ A3 1:12,500

Reproduced from Ordnance Survey map with the permission of Ordnance Survey on behalf of the controller of His Majesty's Stationery Office © Crown Copyright 2024. License number 0100031673, 10001998, 100048492.

© Copyright 2024 Gatwick Airport Limited. No part of this drawing is to be reproduced without prior permission of Gatwick Airport Limited.

Maxar, Microsoft



KEY

- Project Site Boundary
- Existing and retained**
- Gatwick Airport Car Park
- Future Baseline**
- Self-park south robotics
- Car Park
- Electric Vehicle Charging Forecourt
- Proposed**
- Area for new hotel, offices and Car Park H MSCP
- Parking

DOCUMENT
Environmental Statement

DRAWING TITLE
Proposed Car Parks

DATE
July 2023

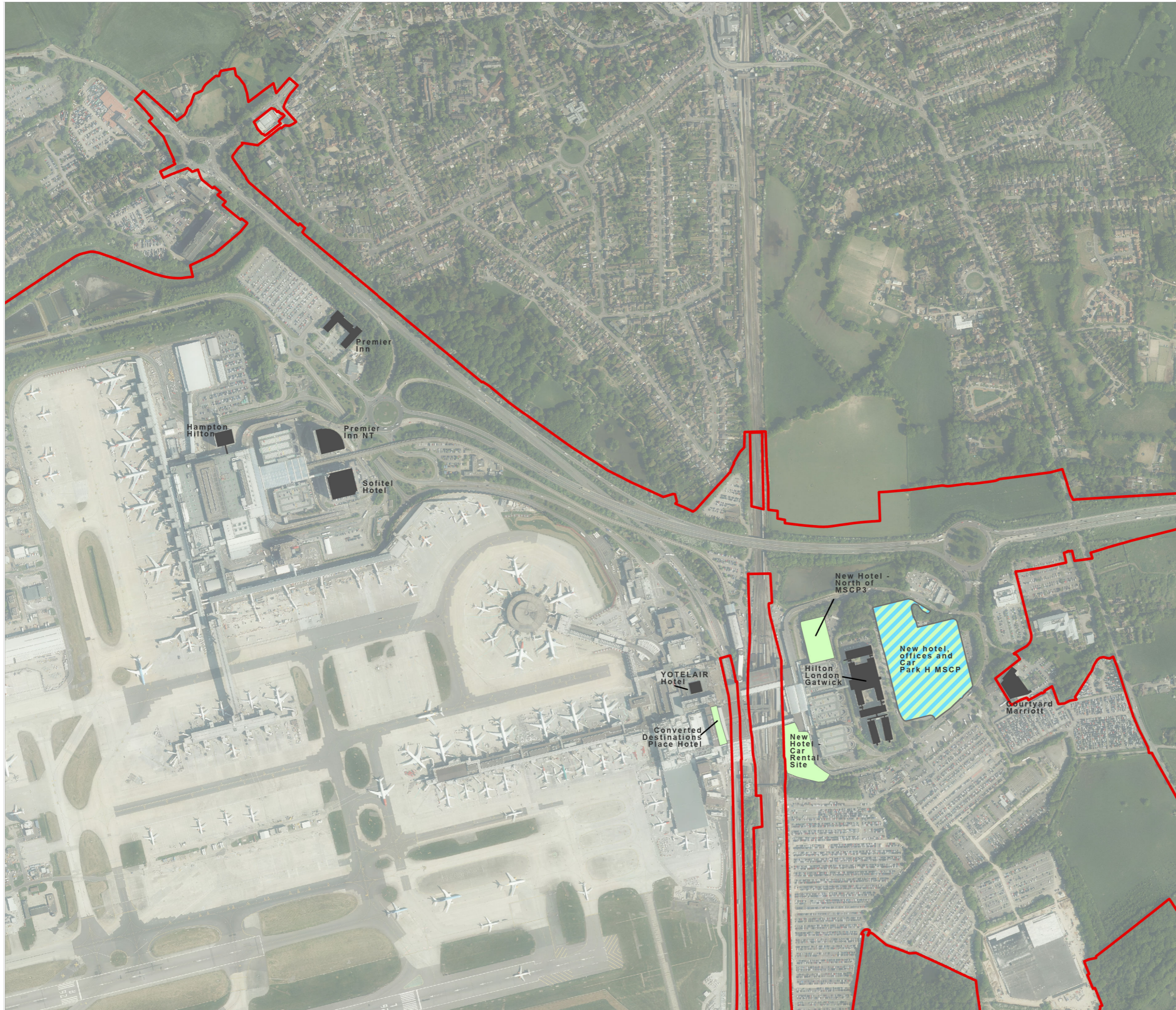
ORIENTATION 	DRAWING NO.	REVISION
	FIGURE 5.2.1b	For ES Issue
	DRAWN BY	PM / CHECKED BY
	MS	KC



Reproduced from Ordnance Survey map with the permission of Ordnance Survey on behalf of the controller of Her Majesty's Stationery Office © Crown Copyright 2023. License number 0100031673, 10001998, 100048492.

© Copyright 2023 Gatwick Airport Limited. No part of this drawing is to be reproduced without prior permission of Gatwick Airport Limited.

Source: Esri, Maxar, Earthstar Geographics, and the GIS User Community



KEY

- Project Site Boundary
- Existing**
- Hotel
- Proposed**
- Hotel
- New Hotel, offices and car park H MSCP

DOCUMENT

Environmental Statement

DRAWING TITLE

Proposed Hotels and Commercial Elements (Version 2 Clean)

DATE

February 2024

ORIENTATION



DRAWING NO.

FIGURE 5.2.1c

REVISION

2.0

DRAWN BY

MS

PM / CHECKED BY

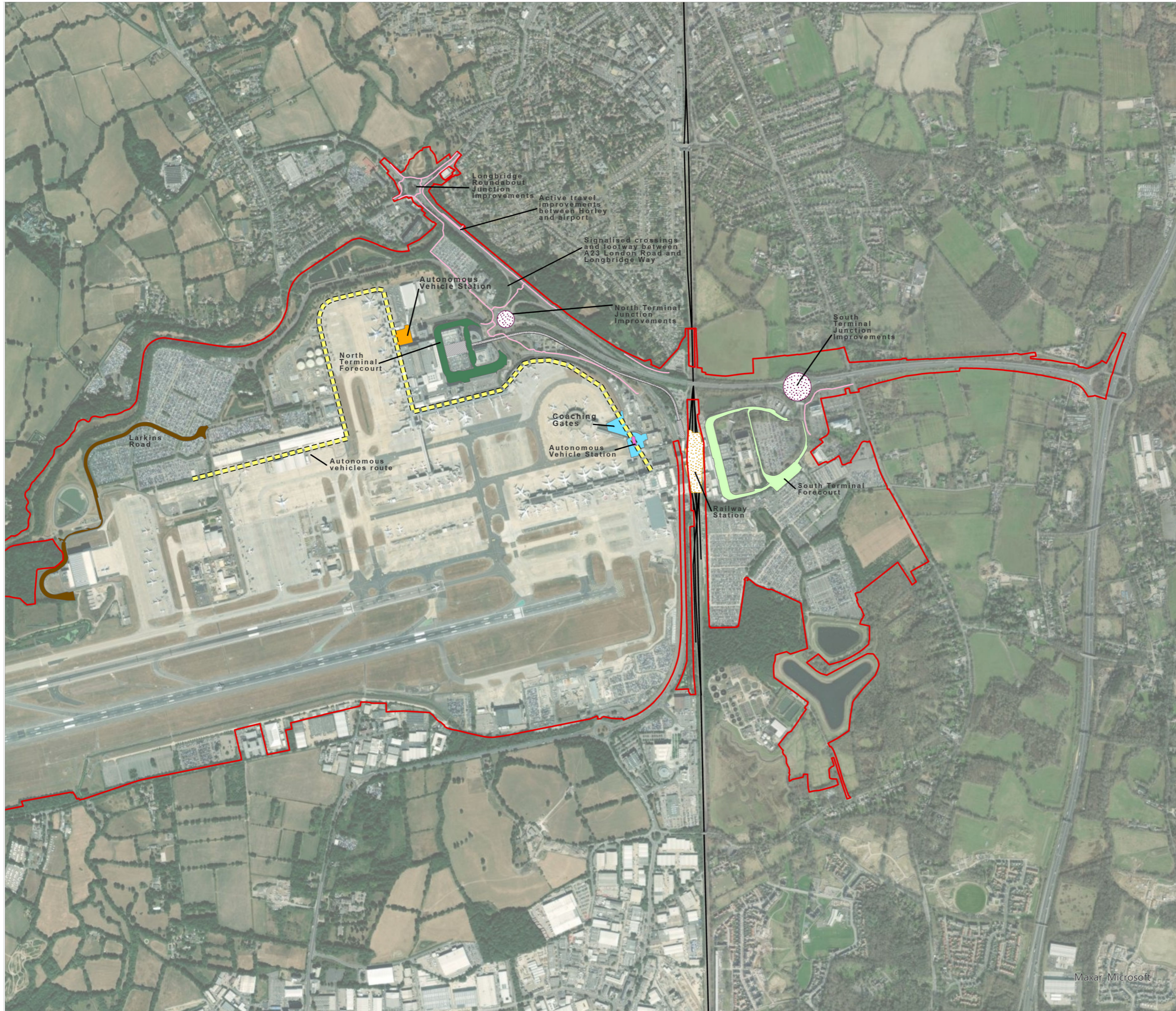
KC

SCALE @ A3 1:8,000



Reproduced from Ordnance Survey map with the permission of Ordnance Survey on behalf of the controller of His Majesty's Stationery Office © Crown Copyright 2024. License number 0100031673, 10001998, 100048492.

© Copyright 2024 Gatwick Airport Limited. No part of this drawing is to be reproduced without prior permission of Gatwick Airport Limited.



KEY

- Project Site Boundary
- Existing**
- Inter-Terminal Transit System Stations
- Inter-Terminal Transit System track
- Future Baseline**
- Gatwick Railway Station
- Junction improvements (including signalisation)
- Proposed**
- North Terminal Forecourt
- South Terminal Forecourt
- North Terminal Autonomous Vehicle station
- South Terminal autonomous vehicles station
- Larkins Road realignment
- South Terminal Coaching Gates
- Autonomous vehicles route
- Active travel improvements

Detailed highway plans are provided in Appendix 5.2.1 of the Environmental Statement.

DOCUMENT

Environmental Statement

DRAWING TITLE

Proposed Surface Access Improvements
(not including highways)
(Version 2 Clean)

DATE

February 2024

ORIENTATION



DRAWING NO.

FIGURE 5.2.1d

REVISION

2.0

DRAWN BY

MS

PM / CHECKED BY

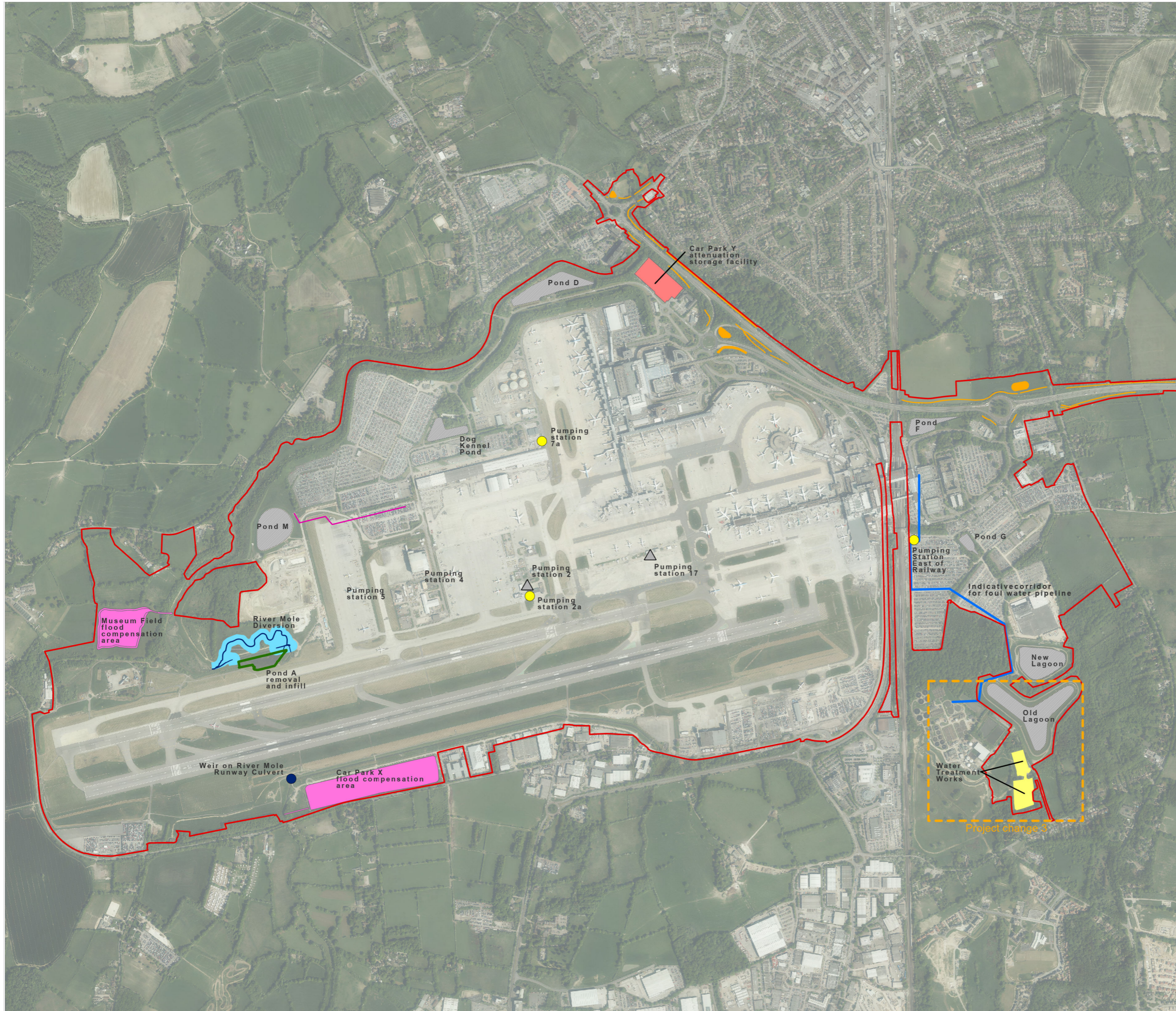
KC

SCALE @ A3 1:16,000



Reproduced from Ordnance Survey map with the permission of Ordnance Survey on behalf of the controller of Her Majesty's Stationery Office © Crown Copyright 2024. License number 0100031673, 10001998, 100048492.

© Copyright 2024 Gatwick Airport Limited. No part of this drawing is to be reproduced without prior permission of Gatwick Airport Limited.



KEY

- Project Site Boundary
- Existing**
- Artificial waterbody
- Pumping Station
- Proposed**
- Water storage
- Flood compensation / Storage Areas
- River Mole Diversion
- River Mole Diversion - secondary channel
- Waterbodies and ditches for the highways scheme
- Water Treatment Works
- Pond A removal and infill
- Indicative corridor for pipeline
- Indicative corridor for foul water pipeline
- Pumping stations
- Weir on River Mole Runway Culvert
- Revisions from version 2.0

DOCUMENT

Environmental Statement

DRAWING TITLE

Proposed Surface Water and Foul Water Improvements (Version 3 Tracked Changed with Project Change 3)

DATE

February 2024

ORIENTATION



DRAWING NO.

FIGURE 5.2.1e

REVISION

3.0

DRAWN BY

MS

PM / CHECKED BY

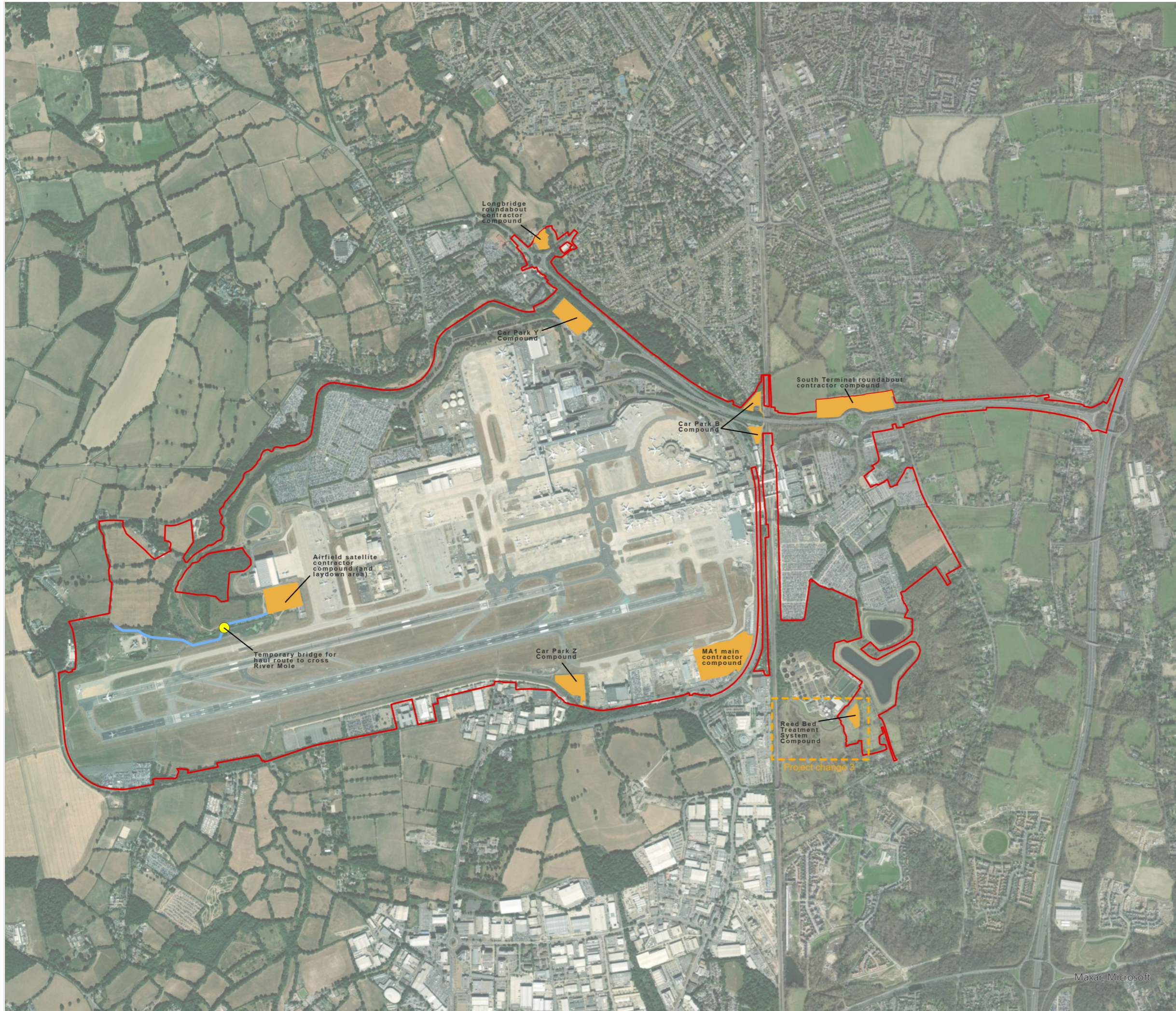
KC

SCALE @ A3 1:16,000



Reproduced from Ordnance Survey map with the permission of Ordnance Survey on behalf of the controller of Her Majesty's Stationery Office © Crown Copyright 2024. License number 0100031673, 10001998, 100048492.

© Copyright 2024 Gatwick Airport Limited. No part of this drawing is to be reproduced without prior permission of Gatwick Airport Limited.



KEY

- Project Site Boundary
- Temporary construction compounds
- Indicative Haul Route
- Temporary bridge
- Revisions from version 1.0

DOCUMENT

Environmental Statement

DRAWING TITLE

Proposed Temporary Construction Compounds (Version 2 Tracked Changed with Project Change 3)

DATE

February 2024

ORIENTATION



DRAWING NO.

FIGURE 5.2.1f

REVISION

2.0

DRAWN BY

MS

PM / CHECKED BY

KC

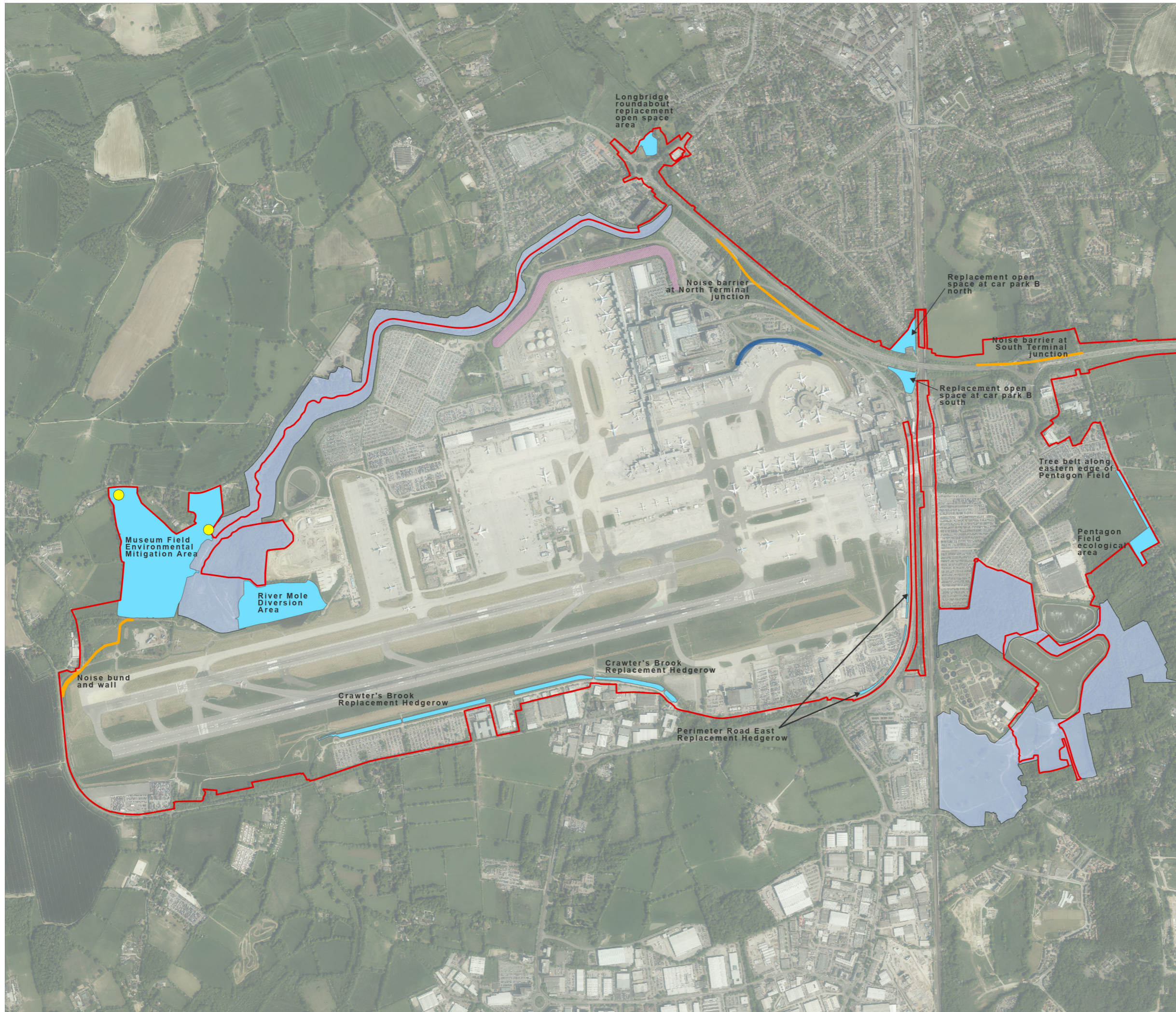
SCALE @ A3 1:19,500



Reproduced from Ordnance Survey map with the permission of Ordnance Survey on behalf of the controller of His Majesty's Stationery Office © Crown Copyright 2024. License number 0100031673, 10001998, 100048492.

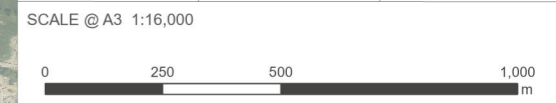
© Copyright 2024 Gatwick Airport Limited. No part of this drawing is to be reproduced without prior permission of Gatwick Airport Limited.

Maxar, Microsoft



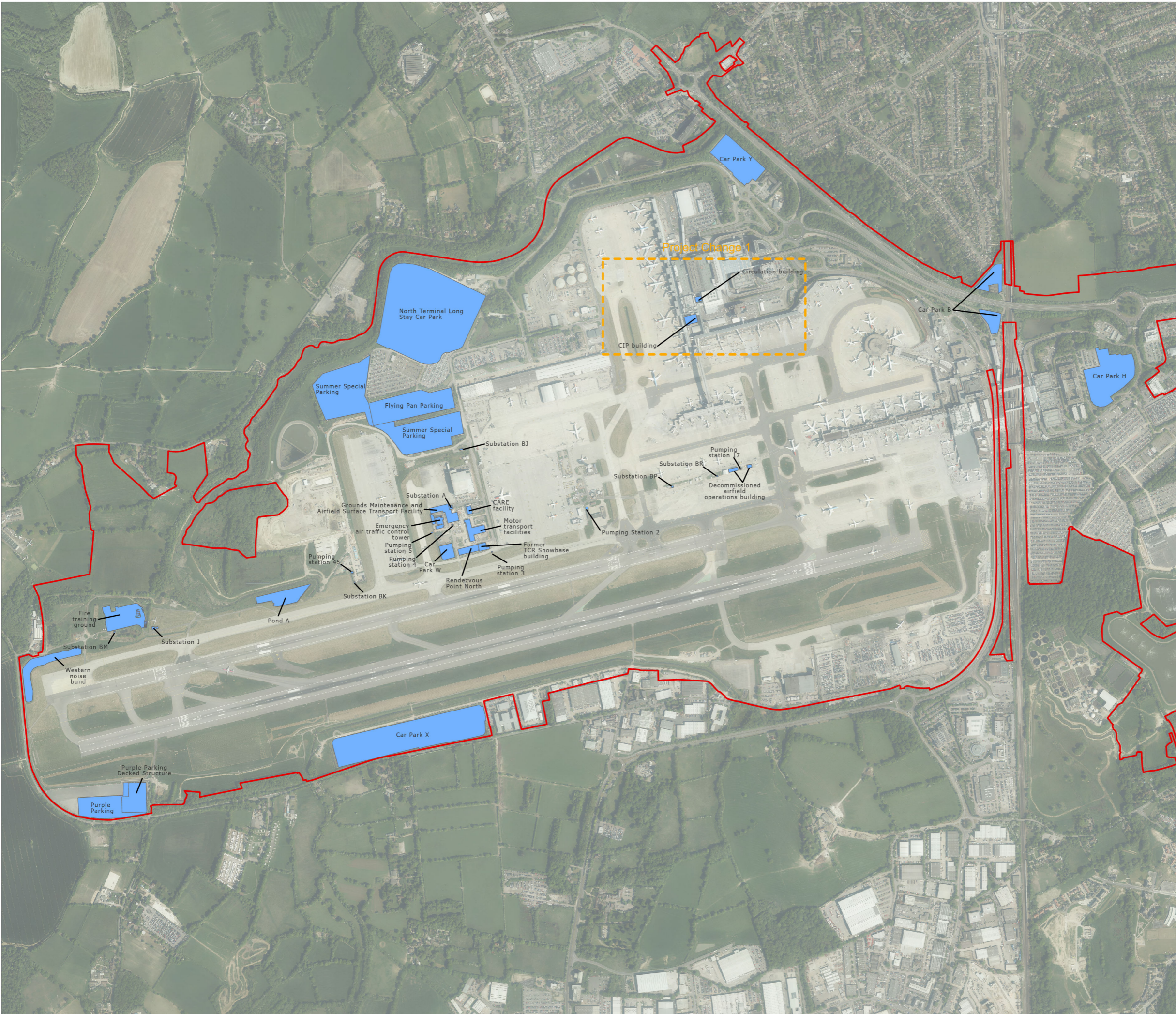
- KEY**
- Project Site Boundary
 - Existing**
 - Gatwick Biodiversity Area
 - Noise bund
 - Noise wall
 - Proposed**
 - Environmental Mitigation Areas
 - Noise Mitigation
 - Farm access bridges
 - Revisions from version 1.0

DOCUMENT		
Environmental Statement		
DRAWING TITLE		
Proposed Environmental Mitigation Areas (Version 2 Clean)		
DATE		
February 2024		
ORIENTATION	DRAWING NO.	REVISION
	FIGURE 5.2.1g	2.0
	DRAWN BY MS	PM / CHECKED BY KC



Reproduced from Ordnance Survey map with the permission of Ordnance Survey on behalf of the controller of Her Majesty's Stationery Office © Crown Copyright 2024. License number 0100031673, 10001998, 100048492.

© Copyright 2024 Gatwick Airport Limited. No part of this drawing is to be reproduced without prior permission of Gatwick Airport Limited.



- Project Site Boundary
- Existing facilities to be demolished/removed
- Revisions from version 2.0

DOCUMENT
Environmental Statement

DRAWING TITLE
Existing Facilities Proposed to be Demolished or Removed (Version 3 Tracked Changed with Project Change 1)

DATE
February 2024

	DRAWING NO. FIGURE 5.2.1h	REVISION 3.0
	DRAWN BY MS	PM / CHECKED BY KC



Reproduced from Ordnance Survey map with the permission of Ordnance Survey on behalf of the controller of His Majesty's Stationery Office © Crown Copyright 2024. License number 0100031673, 10001998, 100048492.

© Copyright 2024 Gatwick Airport Limited. No part of this drawing is to be reproduced without prior permission of Gatwick Airport Limited.